

Sabine

Acoustic storage / Partitioning

Design: Bertil Harström / Johan Kauppi



GLIMAKRA
OF SWEDEN



Sabine

Acoustic storage / Partitioning

Design: Bertil Harström / Johan Kauppi



GLIMAKRA
OF SWEDEN

Sabine is a unique product for modern work places. It is an effective storage furniture system that is sound absorbing, sound reducing and room dividing. The high acoustic values apply regardless of whether the shelf is empty, or if it's filled with binders. This provides a great control of the acoustic effects in the room. The sound absorption is also very uniform across the frequency range.

Width:	770 mm	1122 mm	1474 mm	1826 mm
Height: 820 mm (including legs)				
Model	2 x 2	3 x 2	4 x 2	5 x 2
Weight / Volume	25 kg / 0,25 m ³	33 kg / 0,36 m ³	40 kg / 0,48 m ³	48 kg / 0,59 m ³
Felt area	0,99 m ²	1,24 m ²	1,49 m ²	1,73 m ²
Height: 1172 mm (including legs)				
Model	2 x 3	3 x 3	4 x 3	5 x 3
Weight / Volume	38 kg / 0,25 m ³	50 kg / 0,36 m ³	62 kg / 0,48 m ³	74 kg / 0,59 m ³
Felt area	1,49 m ²	1,86 m ²	2,23 m ²	2,60 m ²
Height: 1524 mm (including legs)				
Model	2 x 4	3 x 4		
Weight / Volume	50 kg / 0,46 m ³	67 kg / 0,68 m ³		
Felt area	1,98 m ²	2,48 m ²		
Height: 1876 mm (including legs)				
Model	2 x 5	3 x 5		
Weight / Volume	63 kg / 0,57 m ³	84 kg / 0,83 m ³		
Felt area	2,48 m ²	3,10 m ²		

DIMENSIONS

Depth: 396 mm

Shelf division: 352 mm

DESCRIPTION

Body: 16 mm white painted MDF board or lacquered Valchromat (coloured throughout MDF) in black or grey.

The body is assembled with glued pins to avoid visible fittings.

The sides and back are perforated.

Maximum load: 100 kg

Sound absorbing material: The perforations are from the outside covered with molded felt panels 352 x 352 x 3 mm with polyether filling of 20 mm.

Metal frame: Powder coated in white, grey or black, h 100 mm.

Wooden legs: White stained solid ash, Ø40 x 100 mm with adjustable foot.

Castors: Aluminum, height 100 mm. Not lockable.

100% recyclable materials.

Sabine

Acoustic storage / Partitioning

Design: Bertil Harström / Johan Kauppi

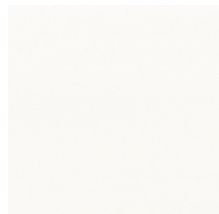


GLIMAKRA
OF SWEDEN

OPTIONS

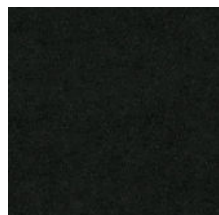
Body: MDF or Valchromat

MDF white



NCS S 0500-N

Valchromat black



NCS S 8500-N

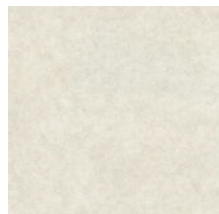
Valchromat grey



NCS S 6502-Y

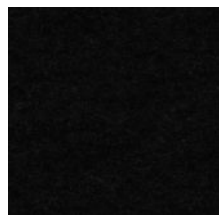
Acoustic felt:

White



NCS S 0500-N

Anthracite



NCS S 8500-N

Grey

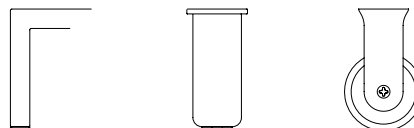


NCS S 5500-N

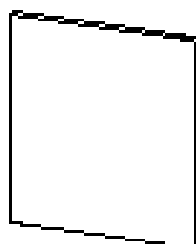
OPTIONS CONT.

Foot: Metal frame in NCS S 0500-N White, NCS S 8500-N

Black or RAL 9006 Grey, wooden legs and castors.



Pushdoor (lock on request)



NCS codes indicates nearby shade. Photographed samples are displayed as a guide and colour variations may occur.

We advise you request actual samples before ordering.

Sabine

Acoustic storage / Partitioning

Design: Bertil Harström / Johan Kauppi



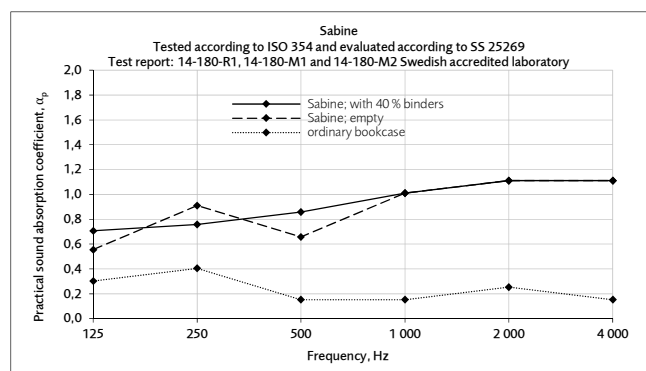
CERTIFICATE

Acoustics: Measurements made in accordance with ISO 354:2003. Evaluation made according to standards for individual objects SS 25269:2013 (Report 14-180-R1, Date 2014-12-12, Report Sabine empty 14-180-M1, Date 2014-12-11, Report Sabine 40 % binders 14-180-M2, Date 2014-12-11, Akustikverkstan)

SPECIFICATION TEXT

E.g: Sabine acoustic storage 4 x 3. Body in black Valchromat with wooden legs in white stained solid ash and felt anthracite. Perforated body covered with molded felt panels for reduced sound propagation.

Acoustics evaluated according to SS 25269.



Equivalent absorption area per m² felt (m²S/m²).

The values are to be multiplied by the storage furniture felt area.

Möbelfakta: The product meets the requirements within quality, environment and responsible supply chains defined by Möbelfakta.



Glimakra of Sweden AB is certified according to ISO 9001:2015 and ISO 14001:2015.



Sabine

Acoustic storage / Partitioning

Design: Bertil Harström / Johan Kauppi



GLIMAKRA
OF SWEDEN

